



# Instructions

## JL - DUAL ARB COMPRESSOR MOUNT

---

Thank you for purchasing your Dual ARB Compressor Mount from AAL! We greatly appreciate your trust in our company. We take that purchase and your commitment to us very seriously. If you have any questions along the way, please don't hesitate to give us a call at 385.202.4188.

**\*\*Please read these instructions thoroughly before starting this project.\*\***

### **Tools/Components Required:**

There is more than one tool for every job, but below is the list of tools we use for this installation.

*Tools listed are for assembly only, as disassembly tools will vary.*

- 4mm Hex Key Allen Wrench  
(for M6 hex key bolts)
- 10mm Socket wrench

## **What's Included**

### **Dual ARB Compressor Mount Parts:**

Driver Front Panel 1

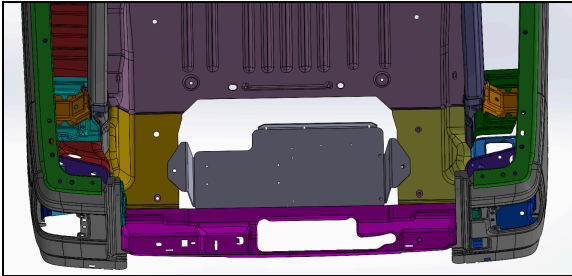
### **Dual ARB Compressor Mount Hardware:**

N/A

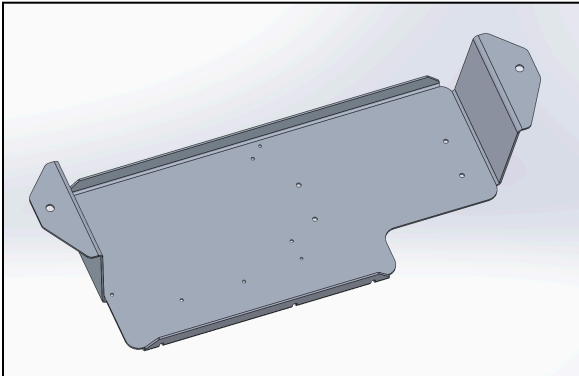
## **Part Overview and Prep**

First lets review images of all the necessary parts and hardware to ensure we have everything we need for the installation process

### **Dual ARB Compressor Mount Parts:**



Main Bracket (1):



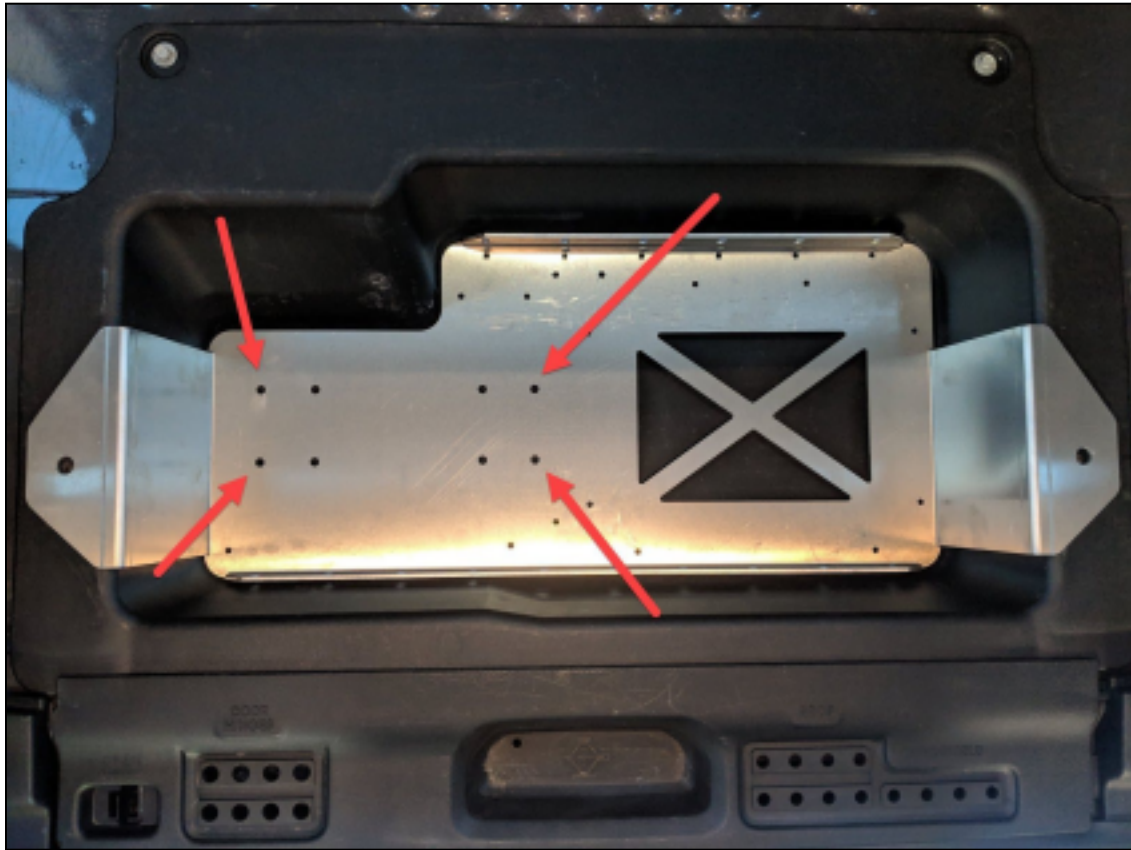
### **Dual ARB Compressor Mount Hardware:**

N/A, All bolts are factory

## **Step 1 - Install the Compressor**

To begin the installation, you must first attach your ARB Dual Compressor to the bracket itself. The compressor lives on the driver's side half of the bracket as pictured below. The compressor onto the bracket and align the holes. ARB supplies four bolts with the compressor.

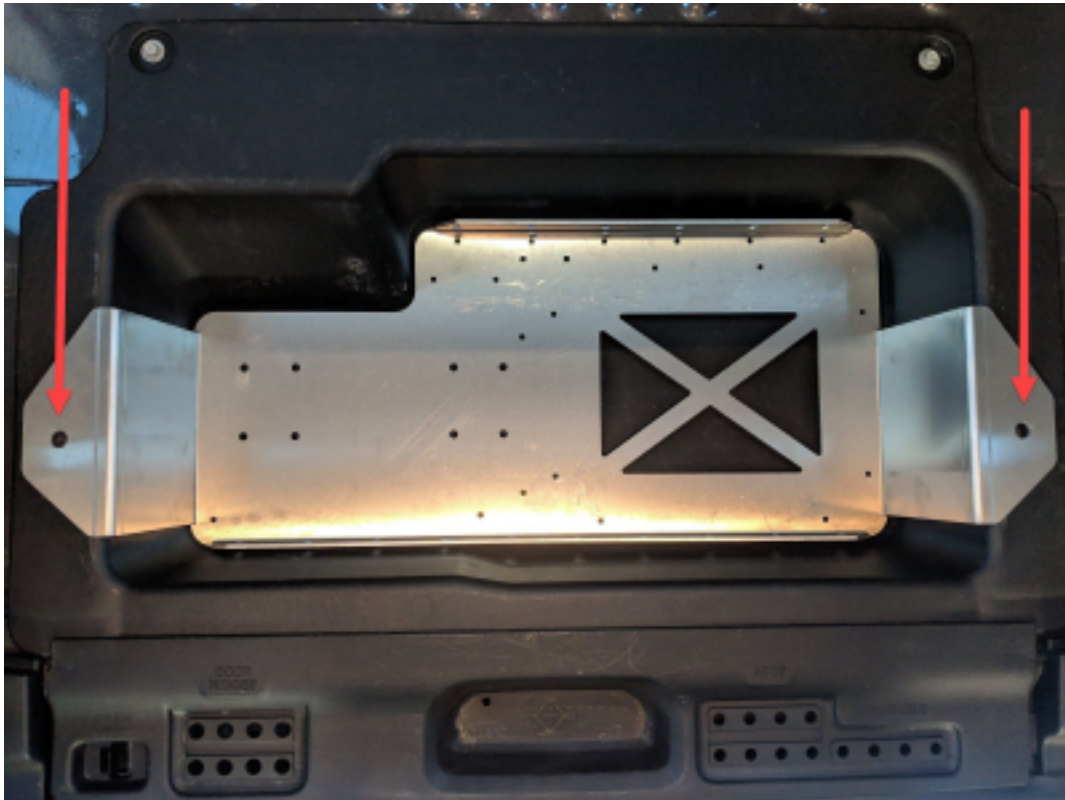
From the bottom side of the bracket, thread the bolts up through the bracket and into the compressor. Leave each bolt loose until all bolts are threaded in. Then, after all bolts are threaded in, tighten each bolt to secure the compressor to the bracket.



## **Step 2 - Install Bracket Into Jeep**

The bracket uses the two OEM bolts already inserted into the cargo compartment of your JLU. Start by removing those bolts using a **10MM** socket.

Then, insert the bracket into the compartment, with the compressor on the driver's side, reuse the bolts you previously removed from the Jeep and tighten them down.



## **Step 3 - Wire/Plumb the Compressor**

To make wiring quicker and easier, we sell a Quick Wiring Harness and an auxiliary battery. These are separate components from the compressor bracket.

## **Share Your Photos!**

We take great pride in building our products and we hope that pride extends to you after installing your Dual ARB Compressor Mount. If you are able to share your photos online (Facebook and Instagram), please tag **@AmericanAdventureLab**. We would love to see how it turned out and give you some reciprocal attention in return!

**Congrats! You're all done!**

**Thank you!**

**At American Adventure Lab, we strive to improve anywhere we can. If you experience any issues with this product or have any suggestions, please let us know.**

**If you have any questions or concerns, please don't hesitate to reach out to us at 385.202.4188 or via email at [Support@erp.adventurelab.com](mailto:Support@erp.adventurelab.com).**

